



# CONTENTS

<small>PAGE</small> <b>03</b>	<b>SOUDAL INTRODUCTION</b>
<small>PAGE</small> <b>05</b>	<b>BUS &amp; COACH SOLUTIONS</b>
<small>PAGE</small> <b>07</b>	<b>TRUCK &amp; TRAILER SOLUTIONS</b>
<small>PAGE</small> <b>08</b>	<b>CARAVAN &amp; TRAILER SOLUTIONS</b>
<small>PAGE</small> <b>09</b>	<b>PRODUCTS</b>
<small>PAGE</small> <b>11</b>	<b>CONSTRUCTION SEALANT CHARACTERISTICS</b>



## BUILD THE FUTURE

Soudal may be a new name to many in the New Zealand automotive sector. However, for over 20 years we have been the lead supplier of sealants, foams and adhesives to Holdfast NZ under the iconic Gorilla brand. In November 2018 that relationship changed when Soudal International proudly stepped in to become sole owner of the Holdfast business in New Zealand. That meant the products, brands and service our customers had come to know and love over 35 years were all retained, but we now had the resourcing and support of the global sealants, foams and adhesives giant that is Soudal.

## OUR COMMITMENT TO PROFESSIONAL QUALITY

- Extensive R&D department
- Continuous investment in production line improvements and new product development
- Production to ISO 9001 and ISO 14000 standards

## OUR REPUTATION IN AUTOMOTIVE

Soudal has more than 50 years' experience in supplying sealants and adhesives into a number of diverse markets around the world with automotive at the forefront of this.

At Soudal, we understand that modern vehicles require high durability and a long service life expectancy. Thanks to a process of continuous innovation and listening closely to our customers we have been able to deliver a variety of new chemical bonding solutions in the area of industrial adhesives. This means we can offer our customers solutions which deliver visual advantages (invisible bonding) and technical advantages (homogenous distribution of forces and excellent paintability).

From our standard range of polyurethanes to our hybrid technologies and MS Polymer flexible adhesive technologies we have a solution for all automotive needs. In particular the advanced polymer technology we use delivers very high end strength and stiffness making them superb for genuine structural bonding as well as having much less requirement for the correct use of primers.

## WE OFFER A COMPLETE RANGE OF:

- Sealants
- Construction Foams
- Adhesives
- Technical Aerosols
- Ancillary Products



# BUS & COACH SOLUTIONS

## TYPICAL APPLICATIONS



### PANEL BONDING

Conventional fixings of side panels require many mechanical fastenings which is labour intensive during production. In service these fixings can cause problems of deterioration, vibration and corrosion.

#### Gorilla Solutions

Gorilla 940FC & Gorilla 240FC MS allow for rapid fixing of side panels with minimal clamping and assembly. Gorilla 940FC & Gorilla 240FC MS is easy to apply and in service reduces friction, by absorbing thermal shock and movement, preventing galvanic corrosion. Gorilla 940FC & Gorilla 240FC MS allow flush panel fixing, giving pleasing aesthetic smooth lines to the exterior of the vehicle, whilst affording a watertight seal.



### DIRECT GLAZING

The process of bonding glass into the vehicle body aperture on front, rear and side glasses to offer a watertight flexible seal between glass and body is now accepted as the industry standard, giving torsional strength and safety in glass installation.

#### Gorilla Solutions

Carbond 955DG offers increased safety for passengers; compensates on fitting tolerances; provides water leak elimination; dampening of wind and driving noise; reduction of drag and increased fuel savings.

# BUS & COACH SOLUTIONS

## TYPICAL APPLICATIONS



### LUGGAGE AND DOOR ASSEMBLY

In the assembly of doors and luggage compartments, traditional fixings between different substrates can cause vibration and noise problems. This can lead to distortion between panels and costly rectification.

#### Gorilla Solutions

Gorilla 940FC & Gorilla 240FC MS offer a flexible bonding solution to eliminate movement and vibration when assembled onto the vehicle. In years of service they help to reduce impact and stress forces on door and luggage compartment mechanisms.

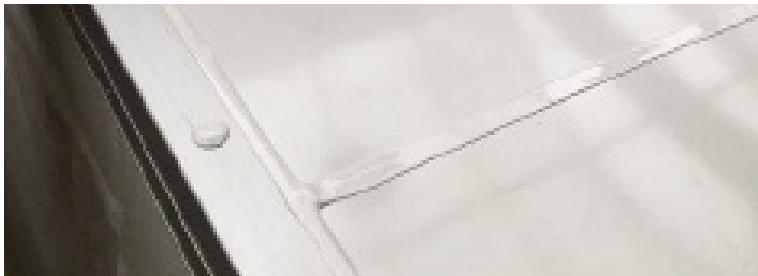
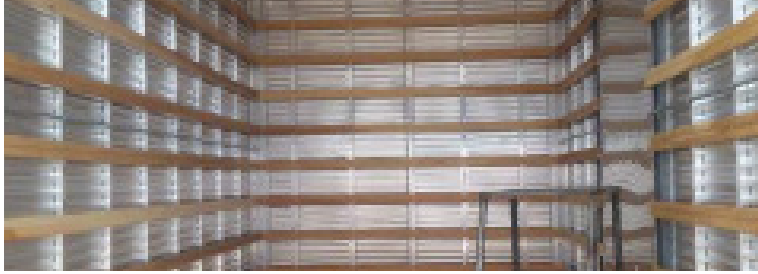
### MORE APPLICATIONS

- Floor Bonding
- Grip And Plastic Bonding
- Seam Sealing
- Moulding And Trim Finishing
- Cosmetic Finishing



# TRUCK AND TRAILER SOLUTIONS

## TYPICAL APPLICATIONS



## SEAM SEALING

Water ingress has long been a problem in the automotive, bus, coach and train industry. A water leak is a potential cause of corrosion and long term costly repair.

### Gorilla Solutions

Gorilla 940FC & Gorilla 240FC MS flexible seam sealants when used in all interior and exterior panel joints not only eliminate traditional fixings and rivets, but when cured, Gorilla 940FC & Gorilla 240FC MS becomes a permanent flexible rubber seal and an economic way to produce a watertight seal.

## MORE APPLICATIONS

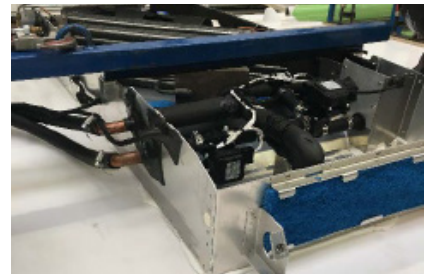
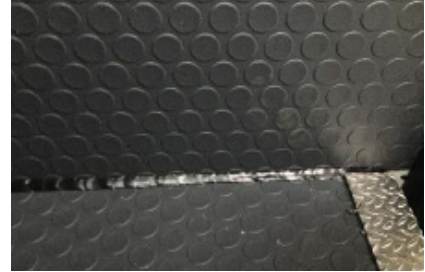
- Panel Bonding
- Grip And Plastic Bonding
- Floor Bonding
- Cosmetic Finishing
- Direct Glazing
- Moulding And Trim Finishing





# CARAVAN AND TRAILER SOLUTIONS

## TYPICAL APPLICATIONS



### FLOOR BONDING

Floor bonding using conventional fixed rigid fasteners is labour intensive and allows moisture ingress into wood causing delamination. Rigid fixtures also allow direct transmittance of vibration and noise through the floor.

#### Gorilla Solutions

Gorilla 940FC & Gorilla 240FC MS provide a flexible elastic seal, which can withstand vibration, shock loads and thermal expansion between a wide variety of substrates. Gorilla 940FC & Gorilla 240FC MS has good chemical resistance and can withstand elongation and distortion.

### COSMETIC FINISHING

Traditional seam sealing in joints can move after application and dry out, leaving unsightly cracks in the paint surface. After some time this allows water ingress, corrosion and eventual panel removal, resulting in costly replacement.

#### Gorilla Solutions

Gorilla 940FC & Gorilla 240FC MS allow for flexible movement in seam sealing where expansion and contraction take place in panel joints, therefore reducing costly repairs and repainting.

### MORE APPLICATIONS

- Panel Bonding
- Seam Sealing
- Grip Bonding
- Luggage & Door Assembly
- Direct Glazing
- Moulding And Trim Finishing



# PRODUCTS

## General Use Adhesive/Sealant

### GORILLA 940FC PU ADHESIVE SEALANT

Gorilla 940FC PU Sealant is a high-quality, elastic, single-component adhesive for structural bonding of body elements based on polyurethane. Ideal for structural bonding in vibrating and constructions, sealing and automotive bonding applications in the building industry, sealing of joints in concrete floors.

- Very easy to apply
- Permanently elastic after curing
- Excellent adhesion
- High resistance to many chemicals
- Agri Quality approved for flooring joints

Colour	Size	Code	Colour	Size	Code
Black	310ml	20054	Black	600ml	20064
White	310ml	20055	White	600ml	20066
Grey	310ml	20082	Grey	600ml	20069



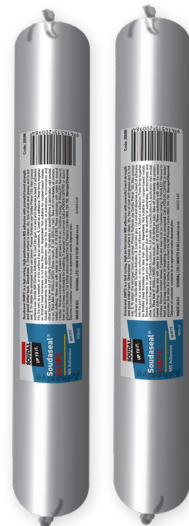
## Use & Facade Sealant

### SOUDAL SOUDASEAL 240FC AUTOMOTIVE SEALANT

Soudal Soudaseal 240FC Is A High Quality, Single Component Product With High Adhesive Strength And Initial Tack. It Is Based On Ms Polymer Technology.

- Very Easy To Tool And Finish
- Good Extrudability Even At Low Temperatures
- Outstanding Bond Strength On Nearly All Surfaces
- High Performance Mechanical Properties
- No Odour And Voc Friendly

Colour	Size	Code
White	600ml	20098
Grey	600ml	20101
Black	600ml	20105



## General Use & Facade Sealant

### GORILLA MS SEALANT

Gorilla MS Sealant is an all- purpose, single-component joint sealant based on the latest MS Polymer Technology

- High performance MS
- BRANZ Appraised formulation
- High elongation of break
- Works on damp surfaces
- Paintable 1 hour after application
- UV resistant
- Asure Quality tested
- Easily repairable

Colour	Size	Code	Colour	Size	Code
White	420gm	20600	Black	600ml	20603
Grey	420gm	20601	Grey	600ml	20604
Black	415gm	20602	White	600ml	20605
			Titania	600ml	20607





# PRODUCTS

## Windscreen Primer

### GORILLA 955DG WINDSCREEN PRIMER

Carbond 955DG Windscreen Primer is only to be used with Carbond 955DG Windscreen Sealant. Is an adhesion promoter with Carbond 955DG Windscreen Sealant.

- Increases bond strength
- To be used before applying Carbond 955DG Windscreen Sealant

Colour	Size	Code
Clear	30ml	20091



## Windscreen Sealant

### GORILLA 955DG WINDSCREEN SEALANT

Gorilla Carbond 955 DG Windscreen Sealant is a ready for use, elastic, single-component adhesive/sealant based on polyurethane for installing windshields in vehicles.

- Good sag resistance
- High end strength
- Good colour stability, weather & UV resistance
- Use with Carbond 955 DG Windscreen Primer

Colour	Size	Code
Black	310ml	20063



## Non-Porous Adhesion Promoter

### GORILLA 696 SURFACE ACTIVATOR

Gorilla 696 Surface Activator is a cleaner, degreaser and Primer. Surface Activator will activate non porous surfaces such as plastics, coatings and metal for improved adhesion of sealants based on silicone, polyurethane and MS Polymer. Use to prepare some plastics, powder coatings and other non porous surfaces before bonding and sealing.

- Liquid, easy to use
- To be used as cleaner and Primer on non-porous surfaces
- Suitable for silicone, polyurethane and hybrid sealants

Colour	Size	Code
Transparent	500ml	19389
Transparent	5L	19392



# PRODUCTS

## High Quality MS Gun

### GORILLA FIXALL MS 600 EXPERT PLUS GUN

Specifically designed and manufactured for high viscosity product; a super-strong and reliable product that fits cartridges and sausages.

- Designed for FixAll MS
- Will fit cartridges or sausages
- 4 x stronger than many standard guns
- Incredibly versatile with a thrust ratio of 1:26s

Colour	Size	Code
Red/Black	-	21105



## High Quality MS Cartridge Gun

### GORILLA FIXALL MS GUN HEAVY DUTY

A cartridge only gun designed for high viscosity products, super strong and reliable.

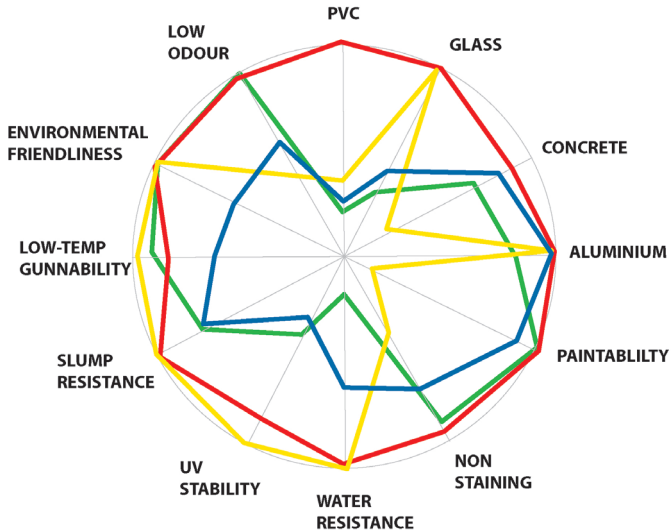
- Reinforced pawl design – extra strength
- Perfect for MS, high viscosity sealants & adhesives
- Super strong
- Accurate action
- Fits all sizes 300 -380ml cartridges




Colour	Size	Code
Red/Black	-	21104



# CONSTRUCTION SEALANT CHARACTERISTICS

- MS POLYMER
- PUs
- SILICONE "ACETIC"
- ACRYLICS



MATRIX	FACADE SEALANT	GENERAL USE & FACADE SEALANT	(Elastic Facade Sealant ) HYBRID FACADE SEALANT
	GORILLA FACADE	SODAL SODASEAL 240FC	GORILLA MS
SODAL SOLUTION			
PERFORMANCE			
TECHNOLOGY	Polyurethane +	Polyurethane +	Hybrid
MODULUS	Low	Mid/High	Low
ELONGATION AT BREAK	> 800	> 800	> 800
SKIN FORMATION (min)	35-45	35-45	10-15
SHORE A HARDNESS	29 ± 5	36 ± 5	25 ± 5
ADHESION TO CONCRETE	★★★★★	★★★★★	★★★★★
ADHESION TO COATED METALS	★★★★★	★★★★★	★★★★★
ADHESION TO VARIOUS WINDOW PROFILES (COAST,PVC,...)	★★★	★★★	★★★★★
UV RESISTANCE	★★★★★	★★★★★	★★★★★
SLUMP/SAGGING	★★★★★	★★★★★	★★★★★
BUBBLE FREE CURING	★★★★★	★★★★★	★★★★★
STANDARDS			
ISO 11600 / CE	F EXT-INT 25LM	F EXT-INT 25HM	F EXT-INT 25LM
OTHERS	ASTM C920 CLASS 35	SNJF	ATG/RAL CERTIFIED/ASTM C920 CLASS 50

★★★ Good      ★★★★★ Excellent      ★★★★★★ Superior

